

ascensores hidráulicos montacoches / *hydraulic car lifts*

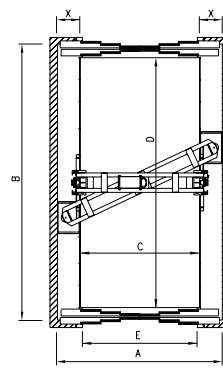
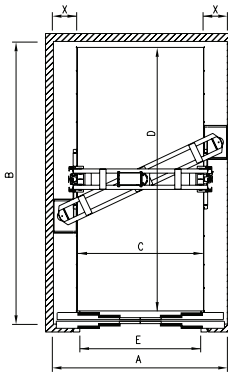
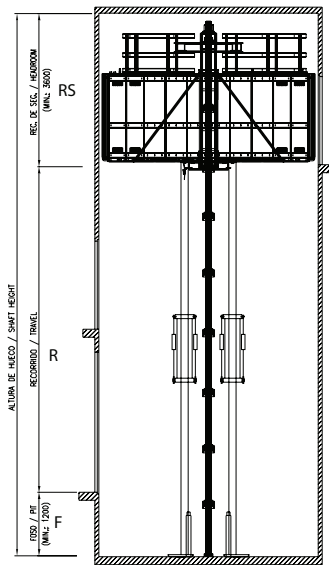


1 acceso / 1 access

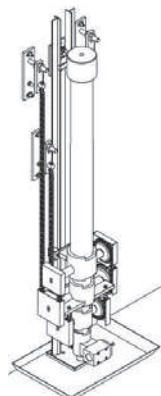
						X
(kg)	AxB (mm)		CxD (mm)	E (mm)	(m/s)	
4000	3280x6100	1:1	2400x5700	2300	0,30	420
	3280x6000		2400x5600			
	3380x6000		2500x5600			
	3380x5800		2500x5400			
	3380x5600		2500x5200			
	3480x5800		2600x5400			
	3480x5600		2600x5200			
	3480x5400	2600x5000				

2 accesos 180° / 2 access 180°

						X
(kg)	AxB (mm)		CxD (mm)	E (mm)	(m/s)	
4000	3280x6200	1:1	2400x5700	2300	0,30	420
	3280x6100		2400x5600			
	3380x6100		2500x5600			
	3380x5900		2500x5400			
	3380x5700		2500x5200			
	3480x5900		2600x5400			
	3480x5700		2600x5200			
	3480x5500	2600x5000				



cilindros telescópicos / *telescopic cylinders*



type	R	F	RS
1 etapa 1 stage	3000	1200	3600
	3500	1400	3800
2 etapas 2 stages	6000	1200	3600
	6500	1400	3800
3 etapas 3 stages	7000	1400	4000
	>7000	consult	consult